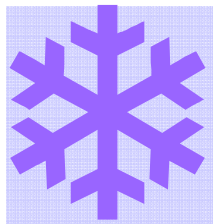


*This bulletin provides an update on all pending land use actions ranging from opportunities for citizen involvement and appeal of proposed development projects, to the meeting calendar for land use and planning related activities.*



## APPLICATIONS IN PROCESS

**PLANNING COMMISSION** – is scheduled for **Wednesday, January 20, 2010 at 7:00 pm** in the **City Council Chambers** located at **833 S. Spruce Street**.

- \* Public hearing on proposed contract rezone to increase the residential density from 4.5 to 6 dwelling units on a lot zoned R-3 Multi-Family. Site is located at 1231 E. Fairhaven Avenue. Roger Helgeson, applicant.
- \* Discussion of the work program and next steps for the Shoreline Master Program update, including expanding the scope to cover the implementation of the Gages Slough plans.
- \* Proposed amendment to the Sign Code to allow Electronic Message Centers along and facing Interstate 5 only, up to 80 square feet in area, as a component of a pylon sign, for developments larger than 20 acres in size subject to specific standards. Presentation by Outlet Shoppes.

**BOARD OF ADJUSTMENT**— meets **Wednesday, January 20, 2010 at 6:00 p.m.** in the **City Council Chambers**.

- \* Public hearing to hear public comments on a proposed Variance to establish existing nonconforming front yard setback on a corner lot for the record in order to complete a Boundary Line Adjustment to create two small residential lots. 20 feet required; 12 feet existing on the Holly Street side. Site is located at 830 E. Vernon Ave. Miguel Quezada, applicant.

## JANUARY 2010 - Meeting Calendar

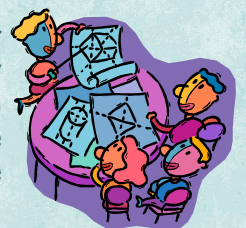
- CITY COUNCIL** — Thursday, January 14 & 28, 2010 at 7 pm
- PLANNING COMMISSION** - Wed., January 20, 2010 at 7 pm
- BOARD OF ADJUSTMENT** - Wed., January 20, 2010 at 6 pm

**Meetings are held in the City Council Chambers at:**

**833 S. SPRUCE STREET, BURLINGTON WA**

## VOLUNTEER NEEDED:

The Mayor is looking for an interested citizen who wants to be on the Board of Adjustment. This is a great opportunity to be a part of your community and learn how the city makes decisions in the neighborhoods. Give us a call if you are interested!



# GAGES SLOUGH & SKAGIT RIVER CORRIDOR UPDATE



Pivotal times are here for the great little City of Burlington, as the Federal Emergency Management Agency continues to deluge the community with difficult issues, ranging from rerating flood insurance policies that were assumed to be grandfathered in, to putting out new Flood Insurance Rate Maps only to withdraw them a week later because of major errors, to the implementation of the National Marine Fisheries Services Biological Opinion that is very complicated and difficult for our city that is mostly located in the 100-year floodplain.

Updating our Gages Slough Management Plan to increase the focus on stormwater features, such as holding capacity,

sediment removal and better water quality is also in process and is being covered in the update of the Shoreline Master Program that includes the Skagit River and 200 feet landward of the edge of the Skagit River, along with Gages Slough wetlands.

---

## **NOTE:**

*The Planning Department is having a monthly citizen meeting at City Hall in the Council Chambers on the third Wednesday of each month at 5:00 p.m., for one hour, if you want to discuss any of the issues with the city. If you have questions that require research and contacting other agencies, every effort will be made to follow up.*



- City Council – 7:00 pm
- Planning Commission – 7:00 pm
- ✗ = City Holiday

Meetings held in City Hall Council Chambers – 833 S. Spruce Street

# 2010 MEETING CALENDAR

| JANUARY |    |    |    |    |    |    | FEBRUARY |    |    |    |    |    |    | MARCH     |    |    |    |    |    |    |
|---------|----|----|----|----|----|----|----------|----|----|----|----|----|----|-----------|----|----|----|----|----|----|
| S       | M  | T  | W  | Th | F  | S  | S        | M  | T  | W  | Th | F  | S  | S         | M  | T  | W  | Th | F  | S  |
|         |    |    |    |    | ✗  | 2  |          | 1  | 2  | 3  | 4  | 5  | 6  |           | 1  | 2  | 3  | 4  | 5  | 6  |
| 3       | 4  | 5  | 6  | 7  | 8  | 9  | 7        | 8  | 9  | 10 | 11 | 12 | 13 | 7         | 8  | 9  | 10 | 11 | 12 | 13 |
| 10      | 11 | 12 | 13 | 14 | 15 | 16 | 14       | ✗  | 16 | 17 | 18 | 19 | 20 | 14        | 15 | 16 | 17 | 18 | 19 | 20 |
| 17      | ✗  | 19 | 20 | 21 | 22 | 23 | 21       | 22 | 23 | 24 | 25 | 26 | 27 | 21        | 22 | 23 | 24 | 25 | 26 | 27 |
| 24      | 25 | 26 | 27 | 28 | 29 | 30 | 28       |    |    |    |    |    |    | 28        | 29 | 30 | 31 |    |    |    |
| 31      |    |    |    |    |    |    |          |    |    |    |    |    |    |           |    |    |    |    |    |    |
| APRIL   |    |    |    |    |    |    | MAY      |    |    |    |    |    |    | JUNE      |    |    |    |    |    |    |
| S       | M  | T  | W  | Th | F  | S  | S        | M  | T  | W  | Th | F  | S  | S         | M  | T  | W  | Th | F  | S  |
|         |    |    |    | 1  | 2  | 3  |          |    |    |    |    |    | 1  |           |    | 1  | 2  | 3  | 4  | 5  |
| 4       | 5  | 6  | 7  | 8  | 9  | 10 | 2        | 3  | 4  | 5  | 6  | 7  | 8  | 6         | 7  | 8  | 9  | 10 | 11 | 12 |
| 11      | 12 | 13 | 14 | 15 | 16 | 17 | 9        | 10 | 11 | 12 | 13 | 14 | 15 | 13        | 14 | 15 | 16 | 17 | 18 | 19 |
| 18      | 19 | 20 | 21 | 22 | 23 | 24 | 16       | 17 | 18 | 19 | 20 | 21 | 22 | 20        | 21 | 22 | 23 | 24 | 25 | 26 |
| 25      | 26 | 27 | 28 | 29 | 30 |    | 23       | 24 | 25 | 26 | 27 | 28 | 29 | 27        | 28 | 29 | 30 |    |    |    |
|         |    |    |    |    |    |    | 30       | ✗  |    |    |    |    |    |           |    |    |    |    |    |    |
| JULY    |    |    |    |    |    |    | AUGUST   |    |    |    |    |    |    | SEPTEMBER |    |    |    |    |    |    |
| S       | M  | T  | W  | Th | F  | S  | S        | M  | T  | W  | Th | F  | S  | S         | M  | T  | W  | Th | F  | S  |
|         |    |    |    | 1  | 2  | 3  | 1        | 2  | 3  | 4  | 5  | 6  | 7  |           |    |    | 1  | 2  | 3  | 4  |
| 4       | ✗  | 6  | 7  | 8  | 9  | 10 | 8        | 9  | 10 | 11 | 12 | 13 | 14 | 5         | ✗  | 7  | 8  | 9  | 10 | 11 |
| 11      | 12 | 13 | 14 | 15 | 16 | 17 | 15       | 16 | 17 | 18 | 19 | 20 | 21 | 12        | 13 | 14 | 15 | 16 | 17 | 18 |
| 18      | 19 | 20 | 21 | 22 | 23 | 24 | 22       | 23 | 24 | 25 | 26 | 27 | 28 | 19        | 20 | 21 | 22 | 23 | 24 | 25 |
| 25      | 26 | 27 | 28 | 29 | 30 | 31 | 29       | 30 | 31 |    |    |    |    | 26        | 27 | 28 | 29 | 30 |    |    |
|         |    |    |    |    |    |    |          |    |    |    |    |    |    |           |    |    |    |    |    |    |
| OCTOBER |    |    |    |    |    |    | NOVEMBER |    |    |    |    |    |    | DECEMBER  |    |    |    |    |    |    |
| S       | M  | T  | W  | Th | F  | S  | S        | M  | T  | W  | Th | F  | S  | S         | M  | T  | W  | Th | F  | S  |
|         |    |    |    |    | 1  | 2  |          | 1  | 2  | 3  | 4  | 5  | 6  |           |    |    | 1  | 2  | 3  | 4  |
| 3       | 4  | 5  | 6  | 7  | 8  | 9  | 7        | 8  | 9  | 10 | ✗  | 12 | 13 | 5         | 6  | 7  | 8  | 9  | 10 | 11 |
| 10      | 11 | 12 | 13 | 14 | 15 | 16 | 14       | 15 | 16 | 17 | 18 | 19 | 20 | 12        | 13 | 14 | 15 | 16 | 17 | 18 |
| 17      | 18 | 19 | 20 | 21 | 22 | 23 | 21       | 22 | 23 | 24 | ✗  | ✗  | 27 | 19        | 20 | 21 | 22 | ✗  | ✗  | 25 |
| 24      | 25 | 26 | 27 | 28 | 29 | 30 | 28       | 29 | 30 |    |    |    |    | 26        | 27 | 28 | 29 | 30 | ✗  |    |
| 31      |    |    |    |    |    |    |          |    |    |    |    |    |    |           |    |    |    |    |    |    |

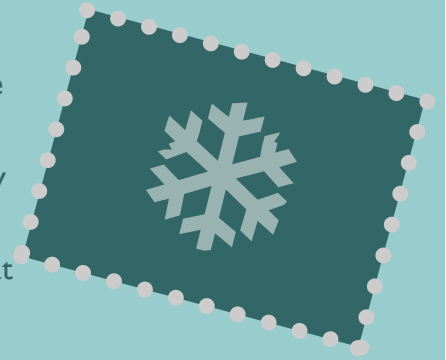
# APPLICATIONS IN PROCESS WITH NO ACTION TAKEN

CONTACT THE PLANNING DEPARTMENT AT 755-9717 FOR MORE INFORMATION ON ANY PROJECT.

## CITY OF BURLINGTON AND DIKE DISTRICT #12 FLOOD HAZARD MITIGATION –

Final Environmental Impact Statement is in process as the complicated puzzle must be clearly presented to address the issues. The Proposed Action is:

Construct 100-year certified levees that are accredited by FEMA along the Skagit River frontage of Burlington based on the Federal Emergency Management Agency's (FEMA) final Flood Insurance Study, when this study is adopted following resolution of any appeals. Provide long term protection measures for the edges of the existing Urban Growth Area that address open space, farmland, greenbelt and public health.



## HOW TO GET INVOLVED

*If you are interested in keeping up on events and issues in Burlington, please contact the Planning Department at 755-9717 or stop by the office at 833 South Spruce Street. If you have neighbors who are interested in what is happening, we will be happy to put them on our mailing list!*

**PLANNING DEPARTMENT**  
833 S. Spruce Street  
Burlington, WA 9833

Phone 360-755-9717 ▪ Fax 360-755-9309  
E-mail: [bplanning@ci.burlington.wa.us](mailto:bplanning@ci.burlington.wa.us)  
Website: [www.ci.burlington.wa.us](http://www.ci.burlington.wa.us)

**LAND USE BULLETIN**

